

# Živjeti u prostoru, a ne u sobama

## To Live in the Space, Not in Rooms

arhitekti  
architects



Sofia von Ellrichshausen

Mauricio Pezo

fotografije  
photographs by

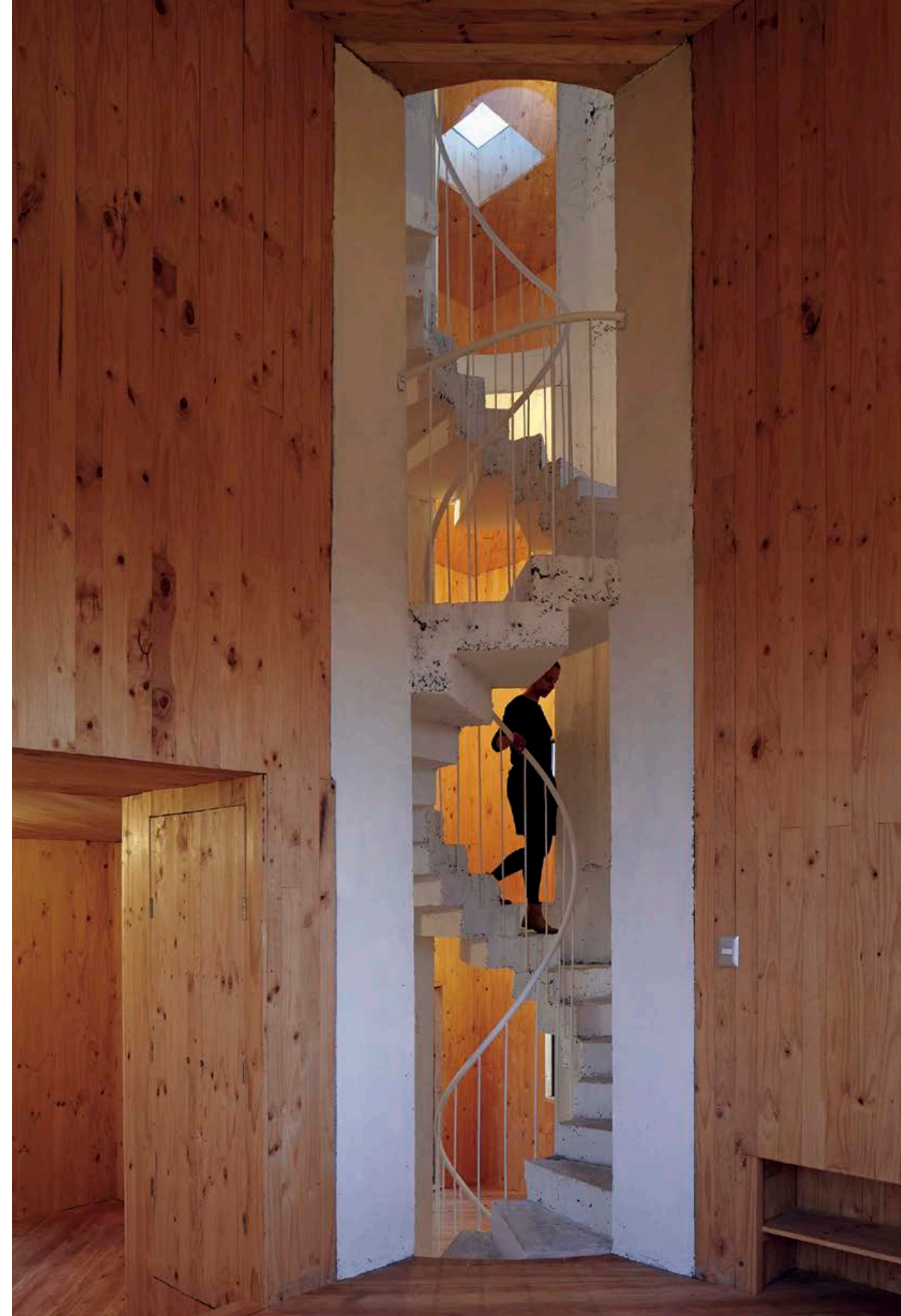
Cristobal Palma

portret  
portrait

Ana Crovetto

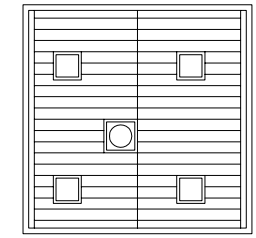
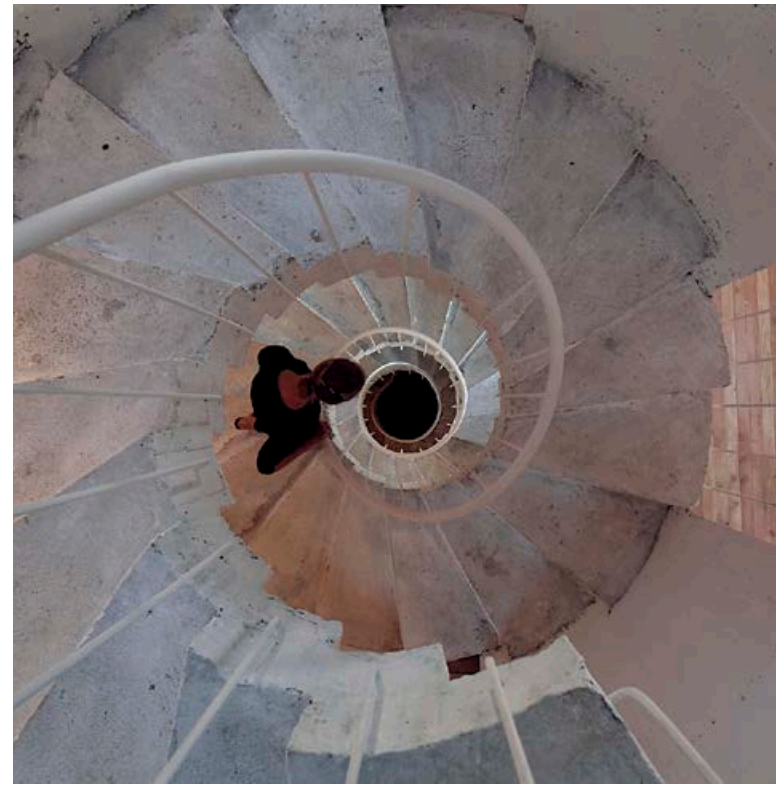
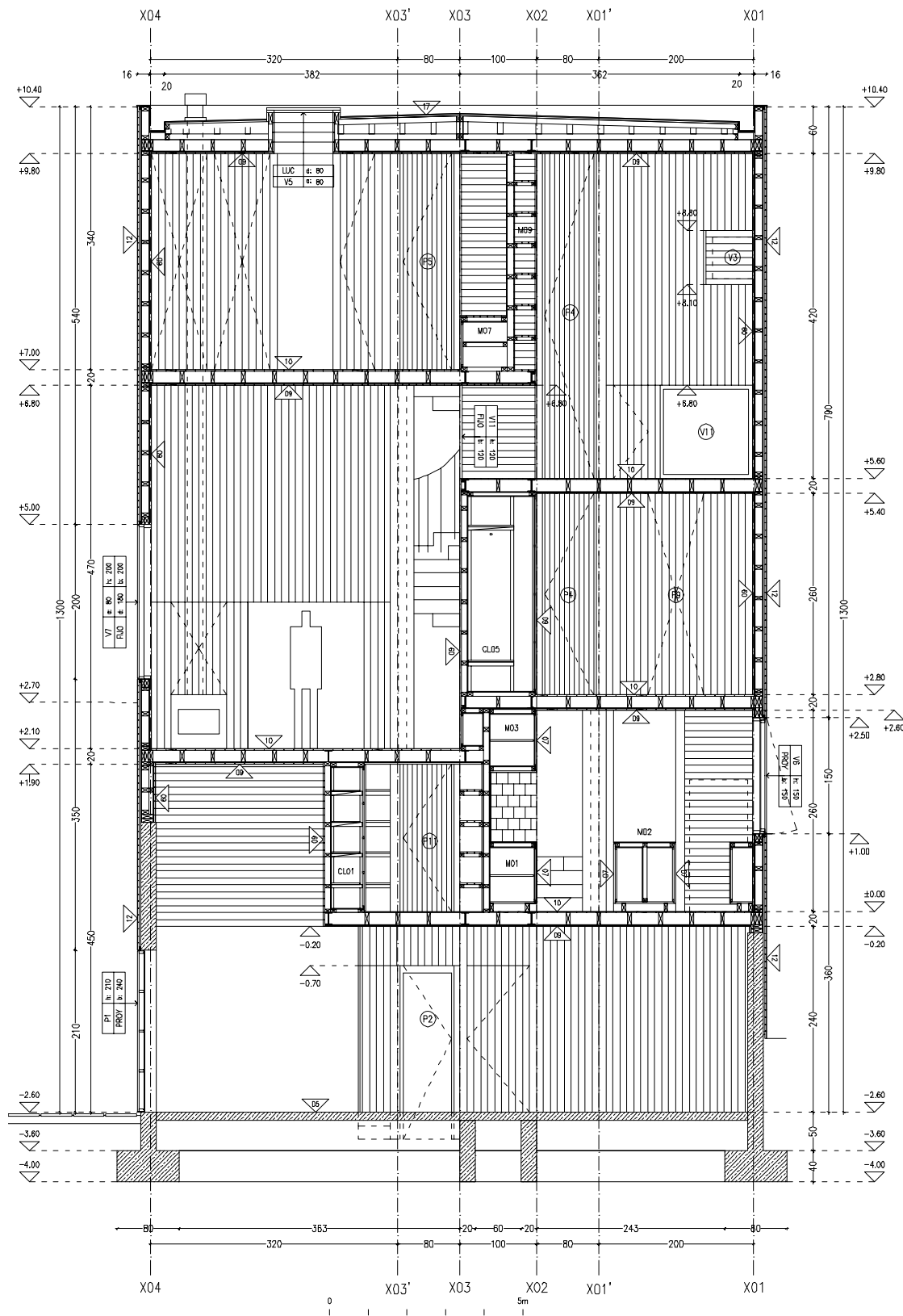
¶ Usred nedavno naseljenog prigradskog područja koje bi moglo biti bilo gdje, ova kuća za par inženjera i njihovo dvoje djece ima kvadratni tlocrt podjeljen u asimetrične kvadrante koji se penju do visine od četiri kata. Četiri stube (što znači 70 cm visine) međusobno odvajaju kvadrante. Na sjecištu zidova koji dijele interijer su spiralne stube sa središnjim stubišnim oknom, jednostavne i bez odmorišta. Između tih zatvorenih prostora dvojak je put: stube koje su dijagonalna

¶ In the middle of a recently populated suburban area which could be anywhere, this house for a couple of engineers and their two children has a square floor plan divided into asymmetrical quadrants that spiral up to a height of four storeys. Four steps (which add 70 cm in height) separate one quadrant from the next. Installed at the intersection of the habitable walls that divide the interior is a spiral staircase with a central stairwell, regular steps and no landings. To move from one



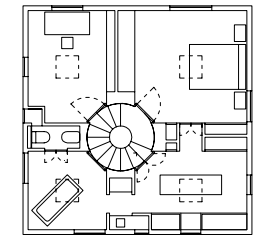
presjek konstrukcije ▶

construction section ▶



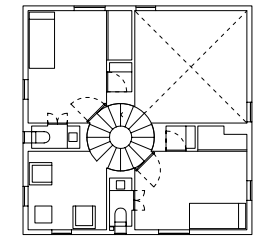
▶ tlocrt krova

▶ roof plan



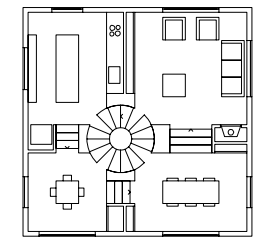
▶ tlocrt 3. kata

▶ 3<sup>rd</sup> floor plan



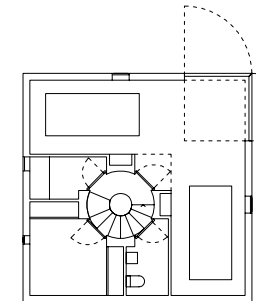
▶ tlocrt 2. kata

▶ 2<sup>nd</sup> floor plan



▶ tlocrt 1. kata

▶ 1<sup>st</sup> floor plan



▶ tlocrt prizemlja

▶ ground floor plan





prečica i blaži put koji povezuje središta svakog zatvorenog prostora. Ukupno je dvanaest platformi na različitim razinama, gdje je rotacija od 360 stupnjeva ekvivalentna jednom cijelom katu. Sekvenca koja se uzdiže uspostavlja različite stupnjeve intimnosti i blizine između pojedinih kućnih funkcija što se pružaju od kuhinje i nekoliko blagovaonica u prizemlju do spavaćih soba i studija na najvišem dijelu kuće. Ovaj raspored vodi do aktivacije određenih prostorija prema dobu dana i vrsti obiteljske interakcije kroz središnju komunikaciju. Tu drvenu



enclosed space to the next there are two routes: the stairs, which function as a diagonal short cut that intersects the corners, and another gentler one that connects the centres of each enclosed space. In total there are twelve platforms at different levels, in which a rotation of 360 degrees is equivalent to a whole floor. The ascending sequence establishes varying degrees of intimacy and proximity between the different domestic functions, which extend from the kitchen and a couple of dining rooms at ground level to the bedrooms or



kuću podržavaju središnje stubište, robustna struktura spiralno postavljenih ploča i četiri stupa od armiranog betona koji se uzdižu kroz čitavu visinu volumena. Na dnu se središte stubišta podudara s dijagonalnim ulazom u kuću. Vanjska fasada obložena je ventiliranim pločama i blago uokvirenim staklenim panelima.

the study in the top part of the house. This stratification leads to the activation of certain rooms according to the time of day and a sort of family interaction throughout the central void. This wooden house is supported on the central staircase, a robust entity of folded slabs and four reinforced concrete columns that rise through the entire height of the volume. At its base, the centre of the staircase coincides with the diagonal entrance to the house. The outer façade is lined with a ventilated sheet of boards and lightly framed glass panels.